

M.Sc. Psychology, Friedrich Schiller University, Jena

Branch of Study:

**Cognitive Psychology and Cognitive
Neuroscience (CPCN)
(Kognitive Psychologie und Kognitive
Neurowissenschaften)**

Program from WS 2023/24



FRIEDRICH-SCHILLER-
UNIVERSITÄT
JENA

Objectives

- To convey modern *Cognitive Sciences*, considering both current methodological approaches (particularly those of the *Cognitive Neurosciences*) and emotional and social determinants of human experience and behaviour, with a specific focus on social interaction.
- To provide basic training which enables students to work in scientifically-grounded professional fields as M.Sc. in Psychology, such as in healthcare (including neuropsychology and rehabilitation), industry, and non-profit organisations.
- To focus on international research. The program can be studied in English.
- To support preparation for PhD study and scientific career where requested

Structure and People

Modules

- **Research Methods** (Prof. Koch), 15 ECTS-CP (2 Lectures, 2 Practice)
- **Psychological Diagnostics** (Prof. Neyer), 10 CP (1 Lecture, 1 Sem)
 - Students obtain key competences for scientific work in psychological contexts (research methods, diagnostics, statistics, evaluation, intervention, reports etc.)
- **Specialization Foundations I** (Prof. Kovács), 15 CP (3 courses)
 - In-depth competences regarding foundations of cognitive and social (neuro)science, emotion, action, social interaction and human information processing.
- **Specialization Application II** (Prof. Schweinberger), 15 CP (3 courses)
 - Students obtain key competences regarding applied aspects of cognitive and social (neuro)science including current research which is relevant to everyday social interaction, development, neurorehabilitation, forensics, counseling, or intervention.
- **Project** (Prof. Rothermund), (10 CP) (2 Semester): Students plan, conduct, document research project
- **Supplementary Subject** (10 CP): courses from other branch of MPSY or subject
- **Professional Practice** (15 CP): 12 weeks, in up to 2 blocks
- **Master Thesis** (30 CP)

The Project Module (MPSYCP05)

- Note that Project Seminars run over two consecutive semesters
- Typically these are Semesters 2 and 3 (P1-summer – P2-winter), but for more flexibility, there is usually at least one seminar starting in Semester 1 (P1-winter – P2-summer)
- In case you plan to spend a Semester abroad (e.g. Erasmus), plan your Project Seminar so that it fits your plan.
- Project Seminars on offer in WS 2023/24:
 - forthcoming
- Info on Study Abroad: date, time, Dr. J.M. Kaufmann (Erasmus coordinator)

Exams and Credits

- Research Methods (MPSYA01): *2 written exams* (1 per semester)
- Psychological Diagnostics (MPSYCP02): *1 written exam, 1 expert report*
- Specialization Foundations I (MPSYCP03): *1 exam to 1 course, active and successful participation in 2 courses (out of choices)*
- Specialization Applications II (MPSYCP04): *1 exam to 1 course, active and successful participation in 2 courses (out of choices)*
- Project: *project report* (MPSYCP05)
- Supplementary Subject (MPSYA06): at the discretion of lecturer
- Professional Practice (MPSYA07): Certificate of institution, report
- Master Thesis (MPSYA08): Thesis reviews and marks

Sample Study Plan

Sample Study Plan (per Semester)			
1. Semester	2. Semester	3. Semester	4. Semester
Research <u>Methods</u> 2SWS 8CP	Research <u>Methods</u> 2SWS 7CP		
Psychological <u>Diagnostics</u> 2SWS 5CP	Expert Report 2SWS 5CP		
Special. Foundations I 2SWS 5CP	Special. <u>Foundations I</u> 2SWS 5CP		
Special. Foundations I 2SWS 5CP			
Special. Applications II 2SWS 5CP	Special. Applications II 2SWS 5CP		
	Special. Applications II 2SWS 5CP		
		<u>Supplementary Subject</u> 4SWS 10CP	
		Professional Practice 15CP	
	Project (1st part) 2SWS 5CP	Project (2nd part) 2SWS 5CP	
			Master Thesis 30 CP
10SWS 28CP	12SWS 32CP	6SWS 30CP	30CP

Strategies for Planning your Career with Individualised Curricula:

- Unlike in ABERG, CPCN has no Specialization Sub-areas „Vertiefungslinien“ which cross the two specialization modules – giving you much freedom of choice.
- Nevertheless, we recommend you choose your courses so as to fit scientific professions (e.g., academic research, neuropsychology, health and rehabilitation, society, organisations)
- „Communication-orientated“ professions (e.g., social cognition, person perception, global communication, leadership training, personnel selection)
- Professions related to healthcare (e.g., clinical neuroscience, neuropsychological rehabilitation, developmental disorders including autism spectrum disorders)

General Information I

„Cognitive Psychology and Cognitive Neurosciences“

- In general, you are welcome to participate in courses offered within the study branch depending on vacancies. Students enrolled for the study branch are given priority access.
- The M.Sc. in the present study branch can be studied in English.
- The selection of courses in English or in German partly depends on request. Detailed information can be obtained from the respective responsible person of the study branch or module (refer to the Module Catalogue).

General Information II

„Cognitive Psychology and Cognitive Neurosciences“

- It is possible to study the entire curriculum in English only, although some optional courses are offered in either German or English. In practice, if you can only follow courses in one of these two languages, this means that you may have a limited choice of courses – but one that is sufficient to complete the degree.
- The timeliness of the M.Sc. study programme is supported by a variety of funded research projects and research groups of the teaching departments. Do not hesitate to use this opportunity for your own projects, as well as to visit events, colloquia, workshops and presentations by renowned international scientists!
- Information & coordination regarding studying abroad
 - Dr. Jürgen Kaufmann (Erasmus coordinator, General Psychology/Cogn Neurosc.) e.g. 22.10. 18.00

General Information III

„Cognitive Psychology and Cognitive Neuroscience “ Groups and International Research Initiatives

- Center for Lifespan Developmental Science (CELISE) <http://www.celise.uni-jena.de/>
- C-I-R-C (German Center for Psychological Health): <https://c-i-r-c.de/>
- Department of Biological Psychology and Cognitive Neuroscience
<http://www.cogsci.uni-jena.de/>
- Department of Clinical Psychology
<http://www.klipsy.uni-jena.de/>
- Department of Developmental Psychology
<http://www.devpsy.uni-jena.de/>
- Department of General Psychology and Cognitive Neuroscience <http://www.allgpsy.uni-jena.de/>
- Department of General Psychology II
<http://www2.uni-jena.de/svw/allgpsy2/>
- Department of Social Psychology
<http://www.sozialpsychologie.uni-jena.de/>
- Social Potentials in Autism Research Unit <http://www.autismus.uni-jena.de>
- Max-Planck Research School for the Science of Human History
<https://imprs.shh.mpg.de/>

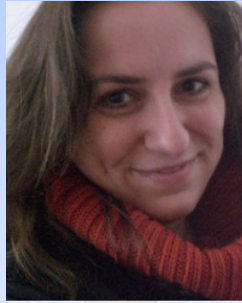
(Some of) your Lecturers' Faces



A. Kowallik



C. Nussbaum



R. Zäske



C. von Eiff



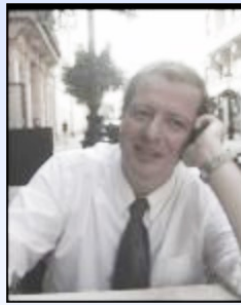
J. Bräuer



H. Kreysa



M. Urban



G. Kovács



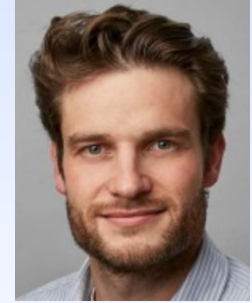
F. Neyer



M. Fiagbenu



J. Kaufmann



T. Koch



K. Rothermund



T. Weiß



L. Ficco



S. Schweinberger

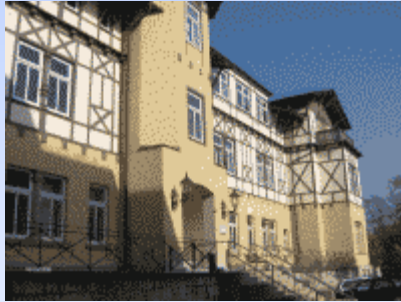


T. Kessler



M. Riediger

Last but not least...



**Welcome to Jena as a Student in the M.Sc.
Psychology Focus
*Cognitive Psychology and Cognitive
Neuroscience!***



**FRIEDRICH-SCHILLER-
UNIVERSITÄT
JENA**